

## **BITUMEN PERTAMINA**

### **Solution for durable road**

## Contact Info

### **Bitumen - Petrochemical Trading Marketing & Trading Directorate PT. Pertamina (Persero)**

Head Office, Main Building, 5<sup>th</sup> Floor  
Jl. Merdeka Timur 1A, Jakarta Pusat 10110 - Indonesia  
Phone : + 62 - 21 - 381 5506  
Fax : + 62 - 21 - 385 7294

### **Petrochemical Marketing Area Sumatera Marketing & Trading Directorate PT. Pertamina (Persero)**

Jl. K.L Yos Sudarso No 8-10, 20114 Medan - Indonesia  
Phone : +62 - 61 - 455 4666  
Fax : +62 - 61 - 455 2831

### **Petrochemical Marketing Region III Marketing & Trading Directorate PT. Pertamina (Persero)**

Jl. Kramat Raya No. 59, 4<sup>th</sup> Floor, 10450 Jakarta - Indonesia  
Phone : +62 - 21 - 31992020  
Fax : +62 - 21 - 39835806

### **Petrochemical Marketing Region V Marketing & Trading Directorate PT. Pertamina (Persero)**

Jl. Jagir Wonokromo No. 88, 9<sup>th</sup> Floor, Surabaya - Indonesia  
Phone : +62 - 31 - 8405181  
Fax : +62 - 31 - 8432039  
Customer Care MOR V : +62 - 31 - 8405555,  
email : [customercare5@pertamina.com](mailto:customercare5@pertamina.com)



**Pertamina is widely known as the main producer of Asphalt in Indonesia. In order to fulfil the requirement for nationwide road construction projects, Pertamina produces Asphalt at Refinery IV - Cilacap with the capacity of production reaching 600.000 MT/year and has the approved specification by the Ministry of Public Works of Republic of Indonesia. The product has also been approved for quality by the government and mainly used in most of the projects by the contractors.**

**Application :**

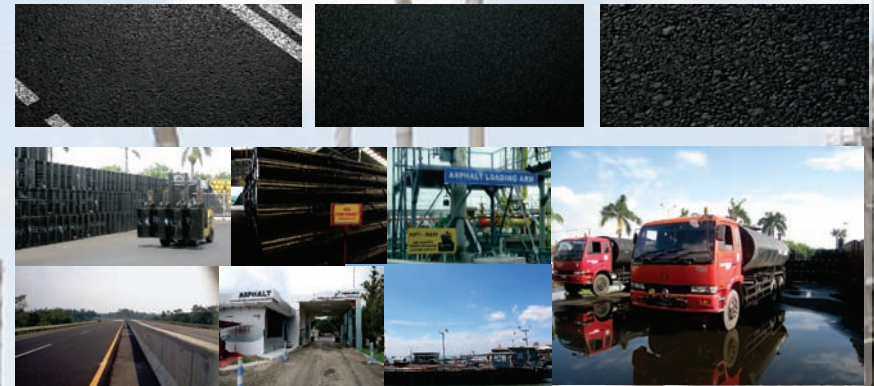
- Road construction
- Anti corrosion materials
- Waterproofing
- Vibration insulator

**Supply Point :**

- ✦ Refinery Unit IV, Cilacap, Central Java
- ✦ Bitumen Plant Gresik, East Java

**Pertamina Asphalt Product Specification**

Asphalt Pen 60/70				
No.	Specification	Method	Min	Max
1	Specific Gravity at 60/60° F	ASTM D - 70	1	-
2	Ductility at 25° C	cm	100	-
3	Flash Point C.O.C	° C	200	-
4	Loss on Heating at 5 Hours/163° C	% wt	-	0.4
5	Penetration at 25° C	0.1 mm	60	70
6	Penetration after Loss on Heating	%	75	-
7	Solubility in CCL	% wt	99	-
8	Softening Point Ring and Ball	° C	48	58



Cilacap Refinery